



Florida
Orchestra
Association

2024 All-State Audition Requirements Middle School (7-8) Orchestra - Bass

Scales

Students will play ONE of the following major scales and arpeggios:

C, G, D, A, F, Bb, Eb - G, F, and A scales and arpeggios must be two octaves

No displacement

All other scales and arpeggios must be one octave.

All scales and arpeggios are to be MEMORIZED. Scales and arpeggios must be played in even eighth notes using separate bows. Quarter note = 60-80

Sight-Reading

Students will be asked to sight read an eight measure original composition.

Etude

Composer: Bottesini, Giovanni

Title: Grand Method Complete, No. 33

Edition: Notated from original public domain version for FOA

Tempo: Quarter Note = 110 - 120

Notes:

Public Domain Source: <https://imslp.org/wiki/Special:ReverseLookup/20587>

Excerpt

Composer: Handel, George Frideric

Title: Hallelujah Chorus from Messiah, HWV 56,

Edition: Leipzig: C.F. Peters, n.d.(ca.1920).

Tempo: Quarter Note = 110-120

Notes: m. 1-51

Public Domain Source: <https://imslp.org/wiki/Special:ReverseLookup/450638>

The All-State Etude and Excerpt will be reduced on the day of the audition. The etudes and excerpts provided are the official audition music. Other sources, methods, and editions may be different - including etude numbers, measure numbers, and rehearsal letters. Students will be evaluated against the attached music.

All provided music is in the Public Domain.

CERTIFIED BY:

Laurie Bitters, President
Florida Orchestra Association, Inc.

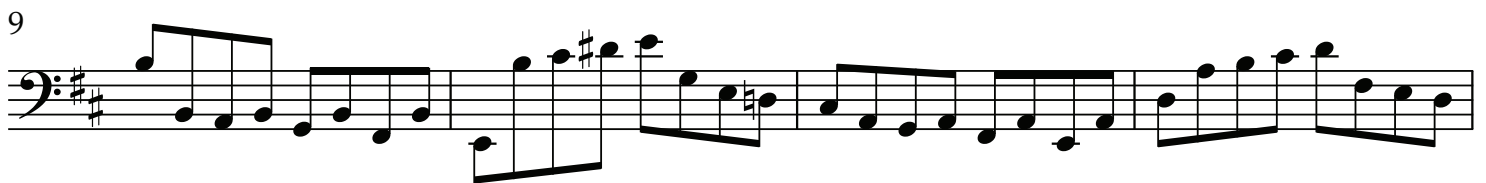
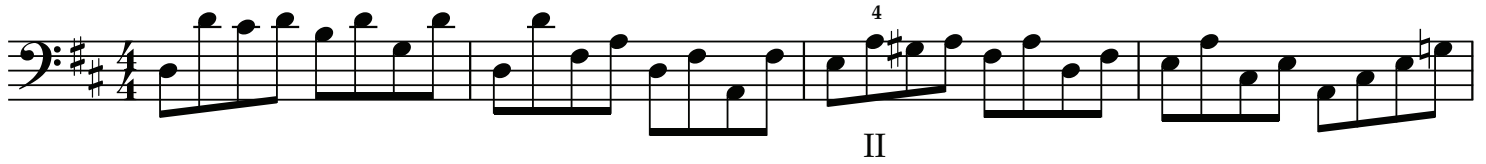
Donald K. Langland, Executive Director
Florida Orchestra Association, Inc.

FOA All-State Audition Requirements 2024

Middle School (7-8) Bass - Etude

Bottesini, Giovanni - Grand Method Complete - No. 33 - Quarter Note = 110 - 120

Con Forza



FOA All-State Audition Requirements 2024

Middle School (7-8) Bass - Excerpt

Handel, George Frideric - Hallelujah Chorus from Messiah, HWV 56 - Quarter Note = 110-120

START

Allegro Solo **Tutti**

6 11 17 22 28 33 42 48

END